

**Shri Narendra Modi**  
Hon'ble Prime Minister

# NEW RAILWAYS *New Jharkhand*

*A progressive journey since 2014*

**Dhanbad Parliamentary Constituency**



## PREFACE

Indian Railways is the lifeline of the Nation and a catalyst for India's progress and economic development. South Eastern Railway (SER) plays a significant role in the socio-economic development of the state of Jharkhand. 36% of SER's jurisdiction covers Jharkhand. With a view to improve railway infrastructure and extend the railway network in Jharkhand, the Ranchi Railway Division was formed in the year 2003. The Government of Jharkhand always extends necessary support and co-operation to this railway towards development of Jharkhand and improvement of train services.



Railways have achieved many visible milestones in Jharkhand in the last 3-4 years in different fields viz. construction of new lines, doubling, introduction of new trains, extension of service, increase in frequency of trains etc. On the freight side, loading of South Eastern Railway has reached the mile stone of 150.76 Million Tonnes, where the lead role has been taken by the state.

The changing face of transport sector in Jharkhand and the expectations of its people are being fulfilled with top most priority. Some of the recent achievements of railways and ongoing projects parliamentary constituency-wise in the state of Jharkhand are being highlighted in this Pamphlet.

It may be noted that the budgets allocated to various projects are not apportioned constituency-wise but reflect the cost of the project.

*\*Jharkhand Railway Network Map Not To Scale*

## DHANBAD PARLIAMENTARY CONSTITUENCY

**A. ASSEMBLY SEGMENTS :** Dhanbad, Chandankiyari, Jharia, Bokaro, Sindri & Nirsa

**B. WORKS COMPLETED IN LAST THREE YEARS:**

**B.1 Infrastructural Developments:**

- ◆ Khanoodih-Gomoh : Limited Height Subway in lieu of unmanned level crossing No.BG 36 at a cost of Rs.1.87 crores
- ◆ Khanoodih-Gomoh : Limited Height Subway in lieu of unmanned level crossing No.BG 35 at a cost of Rs.1.65 crores
- ◆ Khanoodih-Gomoh : Limited Height Subway in lieu of unmanned level crossing No.BG 34 at a cost of Rs.1.41 crores
- ◆ Talgaria-Bandiah : Diversion road for closure of unmanned level crossing No.TB 2 to unmanned level crossing No.TB 3 Limited Height Subway at a cost of Rs.0.71 crores
- ◆ Bhaga-Layabad : Diversion road for closure of unmanned level crossing No.AM 40 to manned level crossing No.AM 39 at a cost of Rs.0.65 crores
- ◆ Tupkadih-Rajabera : Diversion road for closure of unmanned level crossing No.MR 46 to manned level crossing No.MR 47 at a cost of Rs.0.53 crores

**B.2 Passenger Amenities**

- ◆ Circulating area developed at Bhaga Station at a cost of Rs.0.02 crores
- ◆ Replacement of train indication board and auto announcement system at Bokaro Steel City Station at a cost of Rs.0.02 crores
- ◆ 2 number of escalators have been provided at Bokaro Steel City Station at a cost of Rs.2.00 crores
- ◆ Resurfacing of Bhojudih, Talgaria, Tupkadih, Sudamdih and Radhagaon at a cost of Rs.1.50 crores
- ◆ Extension of platform at Bhojudih Railway Station at a cost of Rs.0.60 crores
- ◆ Platform shelter provided at Tupkadih, Bhowrah, Shewbabudih stations at a cost of Rs.0.27 crores
- ◆ Provision of LCD based reservation chart display system at Bokaro Steel City Station at a cost of Rs.0.00820 crores
- ◆ Improvement and extension of portico at Dhanbad Station at a cost of Rs.0.80 crores
- ◆ New circulating area at south side of Dhanbad Station at a cost of Rs.4.00 crores
- ◆ Improvement of circulating area at north side at Dhanbad station at a cost of Rs.0.45 crores
- ◆ Extension of Foot Over Bridge at platform No.6,7 and 8 at Dhanbad station at a cost of Rs.0.74 crores

**C. OTHERS:**

- ◆ 18629/18630 Ranchi-New Jalpaiguri Weekly Express, 58033/58034 Bokaro Steel City-Ranchi Passenger have been introduced
- ◆ 63596/63597 Asansol-Bokaro Steel City MEMU extended up to Muri-Kotshila
- ◆ 12877/12878 Ranchi-New Delhi Garib Rath Express from Bi-weekly to Tri-weekly
- ◆ 12021/12022 Howrah-Barbil Janshabdi Express provided stoppage at Sini
- ◆ 18087 Bankura-Dhanbad MEMU Passenger extended up to Bishnupur
- ◆ 18019/18020 Jhargram-Chandrapura MEMU extended up to Phularitand
- ◆ 18019/18020 Jhargram-Phularitand MEMU extender up to Sonardih

**D. ON-GOING WORKS:**

- ◆ Jarangdih to Danea Doubling (29.21 Km) at a cost of Rs.331.96 crores
- ◆ Danea to Ranchi Road Doubling (25.18 Km), 11 Km in Dhanbad at a total cost of Rs.141.50 crores
- ◆ Dhanbad -Giridih New Line (50 Km), 20 Km in Dhanbad at a total cost of Rs.300 crores

## SOME IMPORTANT PHOTOS



*Enhanced circulating area  
at Dhanbad Station*



*Enhanced circulating area  
at Dhanbad Station*



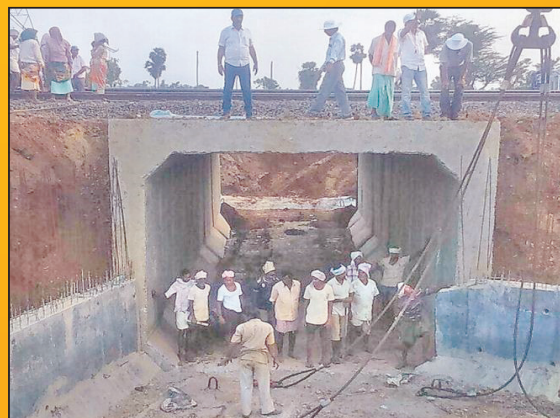
*Enhanced Foot Over Bridge  
at Dhanbad station*



*Enhanced Platform surface  
at Bokaro Steel City Station*



*Construction of new line in progress*



*Works of LHS is in progress  
in Khanoodih-Gomoh section*